

## Fig. 262

### Strap Short

**Size Range:** 1/2" through 4"

**Material:** Carbon steel

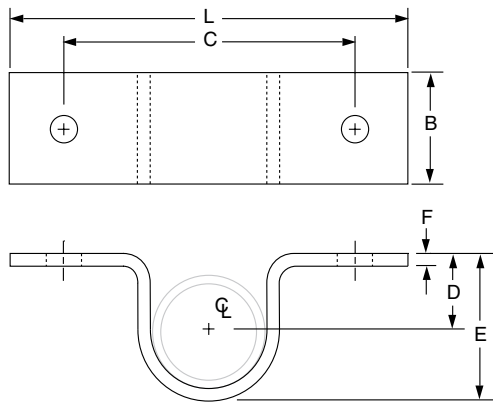
**Finish:** Plain or Galvanized

**Maximum Temperature:** 650° F

**Approvals:** Complies with Federal Specification A-A-1192A (Type 26), WW-H-171-E (Type 26), ANSI/MSS SP-69 and MSS SP-58 (Type 26).

**Ordering:** Specify pipe size, figure number, name and finish.

**Note:** The acceptability of galvanized coatings at temperatures above 450°F is at the discretion of the end user.



**FIG. 262: LOADS (LBS) • WEIGHTS (LBS) • DIMENSIONS (IN)**

Pipe Size	Max Load		Weight	Screw or Bolt Size ■	L	B	C	D	E	F
	w/Lag Screws	w/Bolts to Steel								
1/2	300	410	0.20	Two #18 x 2 steel wood screws or two 3/8" bolts to steel	4	1 1/4	2 3/4	1/2	1 1/8	1/8
3/4			0.23		4 3/8		3 1/8	1 1/16	1 7/16	
1			0.26		4 3/4		3 1/2	1 1/16	1 5/8	
1 1/4			0.36		5		3 3/4	1 1/16	2 1/8	
1 1/2			0.54		5 3/8		4 1/8	1 3/8	2 1/2	
2	450	610	0.60	Two #18 x 3 steel wood screws or two 3/8" bolts to steel	6 3/8	1 1/2	5 1/8	1 1/4	2 3/4	1/4
2 1/2			1.40		6 13/16		5 9/16	1 3/4	3 3/8	
3			1.60		7 7/16		6 1/16	1 7/8	4	
3 1/2			1.80		7 3/16		6 9/16	2 3/16	4 3/8	
4			1.90		8 3/8		7 1/8	2 3/8	5	

■ Screws or bolts not included

## Fig. 126

### One-Hole Clamp

**Size Range:** 3/8" through 4"

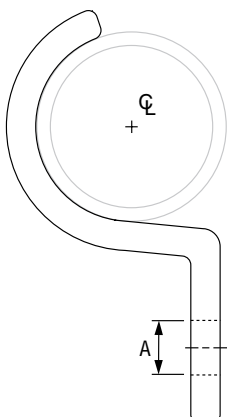
**Material:** Malleable iron

**Finish:** Plain or Galvanized

**Service:** For support of standard conduit, cable and steel pipe on walls or sides of beams. Not recommended for use horizontally on ceilings, bottoms of beams and similar installations since the factor of safety is greatly reduced when so used.

**Maximum Temperature:** 450° F

**Ordering:** Specify pipe size, figure number, name and finish. Specify nominal size of conduit or pipe or outside diameter of lead cable with which the clamp is to be used.



**FIG. 126: WEIGHTS (LBS) • DIMENSIONS (IN)**

Pipe Size	Cable Size or Outside Dia. of Conduit ■	Weight	Dia. of Hole - A	Size Screw/Bolt
3/8	0.67	0.03	1/4	No. 10
1/2	0.84	0.03	5/16	1/4
3/4	1.05	0.05		
1	1.31	0.09		
1 1/4	1.66	0.12	3/8	3/8
1 1/2	1.90	0.16		
2	2.37	0.25	7/16	5/8
2 1/2	2.87	0.49		
3	3.50	0.82		
4	4.50	1.30	3/4	

■ Screws or bolts not included

## Fig. 243

### Pipe Strap

**Size Range:** 1/2" through 6" pipe

**Material:** Carbon steel

**Finish:** Plain

**Service:** Restraint of pipe in specified direction while permitting movement in non-restrained direction.

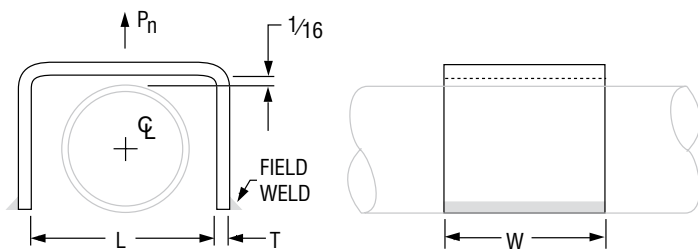
**Maximum Temperature:** 650° F

**Ordering:** Specify figure number, name, and pipe size. Larger sizes available upon request.



**FIG. 243:  
LOADS (LBS) • WEIGHT (LBS) • DIMENSIONS (IN)**

Pipe Size	L	T	W	Rated Load P <sub>n</sub>	Weight
1/2	3	1/4	2	600	0.71
3/4	3 1/2				0.84
1	4				0.98
1 1/4	4 1/2	3/8	3	1,500	2.64
1 1/2	5				2.94
2	5 1/2				3.39
2 1/2	6	1/2	4	2,500	5.20
3	6 1/2				7.93
4	7 1/2				9.63
6	9 3/4				19.97



## Fig. 244

### Pipe Strap

**Size Range:** 1/2" through 6" pipe

**Material:** Carbon steel

**Finish:** Plain

**Service:** Restraint of pipe in specified direction while permitting movement in non-restrained direction.

**Maximum Temperature:** 650° F

**Ordering:** Specify figure number, name, and pipe size. Larger sizes available upon request.



**FIG. 244:  
LOADS (LBS) • WEIGHT (LBS) • DIMENSIONS (IN)**

Pipe Size	Rated Load		L	T	W	Weight
	P <sub>s</sub>	P <sub>n</sub>				
1/2	250	1,500	1	1/4	2	0.39
3/4			1 1/16			0.47
1			1 7/16			0.56
1 1/4	500	2,000	1 3/4	3/8	3	1.62
1 1/2			2			1.81
2			2 1/2			2.20
2 1/2	650	2,300	3	1/2	4	3.56
3			3 7/8			5.74
4			4 3/4			7.16
6			6 3/4			15.32

