

ROD ATTACHMENTS

Fig. 157

Extension piece

Size Range: $\frac{3}{8}$ " through $\frac{7}{8}$ "

Material: Malleable iron

Finish: Plain or Galvanized

Maximum Temperature: 450° F

Service: For attaching hanger rod to various types of building attachments.

Approvals: UL Listed ($\frac{3}{8}$ " - $\frac{7}{8}$ " rod size) and FM Approved ($\frac{3}{8}$ " & $\frac{1}{2}$ " rod size).

Installation: May be used to form an integral part of malleable iron beam clamps Fig. 218, see page 69.

Ordering: Specify rod size, figure number, name and finish.

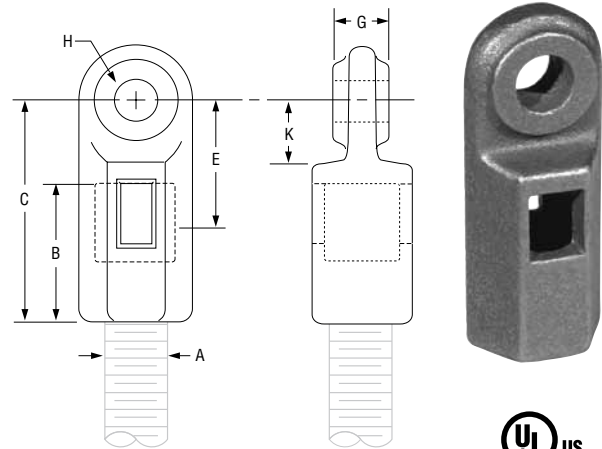


FIG. 157: LOADS (LBS) • WEIGHTS (LBS) • DIMENSIONS (IN)

Rod Size A	Max Load	Weight	B	C	Rod Take-Out - E	G	H	K
$\frac{3}{8}$	730	0.20	1 $\frac{1}{4}$	2 $\frac{1}{16}$	1 $\frac{1}{4}$	$\frac{1}{2}$	$\frac{1}{2}$	$\frac{9}{16}$
$\frac{1}{2}$	1,350	0.40	1 $\frac{3}{8}$	2 $\frac{5}{16}$	1 $\frac{3}{8}$	$\frac{5}{8}$		$\frac{11}{16}$
$\frac{5}{8}$	1,550	0.44	1 $\frac{1}{2}$	2 $\frac{7}{16}$	1 $\frac{7}{16}$		$\frac{3}{4}$	$\frac{3}{4}$
$\frac{3}{4}$	2,100	0.65	1 $\frac{3}{4}$	2 $\frac{7}{8}$	1 $\frac{11}{16}$			$\frac{9}{16}$
$\frac{7}{8}$	2,350	0.78	1 $\frac{7}{8}$	2	1 $\frac{3}{4}$			

Fig. 290: Right-Hand Thread

Weldless Eye Nut

Fig. 290L: Left-Hand Thread

Size Range: $\frac{3}{8}$ " through 2 $\frac{1}{2}$ "

Material: Forged steel

Finish: Plain or Galvanized

Service: For use on high temperature piping installations.

Approvals: Complies with Federal Specification A-A-1192A (Type 17), WW-H-171-E (Type 17), ANSI/MSS SP-69 and MSS SP-58 (Type 17).

Features:

- Supports loads equal to the full limitation of the hanger rod.
- Provides flexible connection when used with straight thread rod.

Ordering: Specify rod size, figure number, name and finish.

If other than standard combination of eye nut number and rod size, specify eye nut number and special rod tapping size.

Note: The acceptability of galvanized coatings at temperatures above 450°F is at the discretion of the end user. Larger eye nuts featuring smaller rod sizes are commonly available.

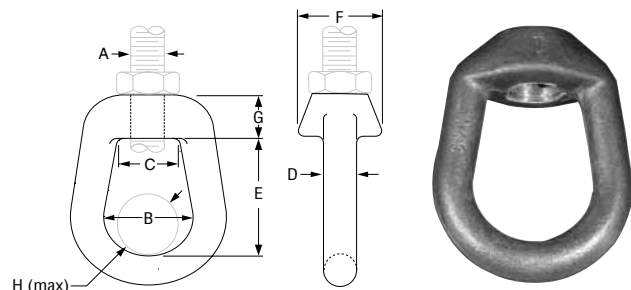


FIG. 290, 290L: LOADS (LBS) • WEIGHTS (LBS) • DIMENSIONS (IN)

Rod Size A	Max Load		Weight	B	C	D	E	F	G	H	Eye Nut Number
	650° F	750° F									
$\frac{3}{8}$	730	572	0.28	1 $\frac{5}{32}$	1 $\frac{3}{16}$	1 $\frac{3}{32}$	1 $\frac{17}{32}$	3 $\frac{1}{32}$	$\frac{5}{8}$	1	0
$\frac{1}{2}$	1,350	1,057	0.28								
$\frac{5}{8}$	2,160	1,692	0.62	1 $\frac{1}{2}$	1 $\frac{3}{16}$	$\frac{1}{2}$	2	1 $\frac{3}{8}$	1 $\frac{1}{16}$	1 $\frac{1}{4}$	1
$\frac{3}{4}$	3,230	2,530	0.60								
$\frac{7}{8}$	4,480	3,508	1.70	2	1 $\frac{11}{16}$	$\frac{3}{4}$	2 $\frac{11}{32}$	1 $\frac{15}{16}$	1	1 $\frac{3}{4}$	2
1	5,900	4,620	1.70								
1 $\frac{1}{4}$	9,500	7,440	3.60	2 $\frac{1}{2}$	1 $\frac{13}{16}$	1	3 $\frac{3}{8}$	2 $\frac{3}{8}$	1 $\frac{1}{4}$	2 $\frac{1}{4}$	3
1 $\frac{1}{2}$	13,800	10,807	3.50								
1 $\frac{3}{4}$	18,600	14,566	16.40	4	4	1 $\frac{1}{2}$	6 $\frac{1}{4}$	4	2 $\frac{1}{4}$	3 $\frac{3}{4}$	4
2	24,600	19,265	15.90								
2 $\frac{1}{4}$	32,300	25,295	15.40								
2 $\frac{1}{2}$	39,800	31,169	14.90								

Fig. 299

Forged Steel Clevis

Size Range: 3/8" through 4"

Material: Forged steel

Finish: Plain or Galvanized

Service: For use on high temperature piping installations.

Approvals: Complies with Federal Specification A-A-1192A (Type 14), WW-H-171-E (Type 14), ANSI/MSS SP-69 and MSS SP-58 (Type 14).

Features:

- Available with pin and cotter pins, if required.

Ordering: Specify rod size, figure number, name and finish. If pin and cotter pins are required, specify "with pin". If other than standard combination of clevis number and rod size is required, specify clevis number, special rod tapping size, pin size, grip.

Note: The acceptability of galvanized coatings at temperatures above 450°F is at the discretion of the end user.

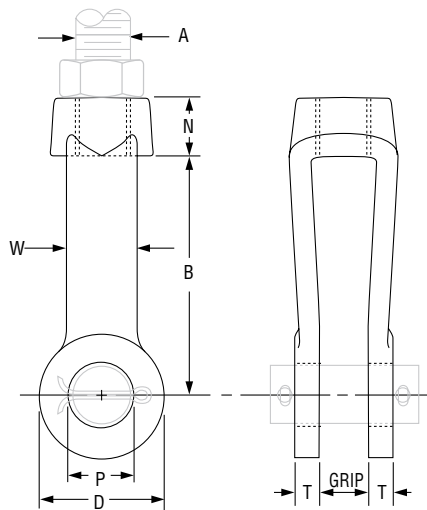


FIG. 299: LOADS (LBS) • WEIGHTS (LBS) • DIMENSIONS (IN)

Rod Size A	Max Load		Weight		Rod Take Out - B	D	N	Pin Dia. P	T	W	Grip	Clevis No.
	650° F	750° F	Without Pin	With Pin								
3/8	730	572	0.9	1.0	3 1/16	1 7/16	5/8	1/2	5/16	1 1/16	1/2	2
1/2	1,350	1,057	0.7	0.9				5/8			5/8	
5/8	2,160	1,692	0.7	0.9				3/4			3/4	
3/4	3,230	2,530	2.5	3.0	4	2 1/2	1	7/8	5/16	1 5/16	3/4	2 1/2
7/8	4,480	3,508	2.5	3.4				1		7/8		
1	5,900	4,620	4.0	5.1				1 1/8		1		
1 1/4	9,500	7,440	3.8	5.5	5	3	1 5/16	1 1/8	1/2	1 1/2	1	3
1 1/2	13,800	10,807	6.0	8.5				1 3/8		1 1/4		
1 1/2	13,800	10,807	6.0	8.5				1 3/8		1 1/4		
1 3/4	18,600	14,566	8.0	12.9	6	4	1 3/4	1 7/8	5/8	2	1 1/2	4
2	24,600	19,265	16.0	23.3				2 1/4		2 1/2		
2 1/4	32,300	25,295	26.0	35.1				2 1/2		3/4		
2 1/2	39,800	31,169	25.5	36.0	8	6	2 3/4	2 3/4	3/4	3	2 1/2	6
2 3/4	49,400	38,687	36.0	50.0				3		7/8		
3	60,100	47,066	35.0	51.5				3 1/4		3 1/2		
3 1/4 •	71,900	56,307	90.0	116.0	9	7	3	3	7/8	3 1/2	4	7
3 1/2 •	84,700	66,331	88.0	118.0				3 1/2				
3 3/4 •	98,500	77,139	86.0	120.0				4				
4 •	113,400	88,807	84.0	122.0				4 1/4				

• Furnished with 4 UN series threads.



- Table of Contents
- General Notes
- Copper Tubing Hangers
- Stainless Steel Hangers
- CPVC Pipe Hangers
- Pipe Rings
- Clevis Hangers
- Steel Pipe Clamps
- Socket Clamps
- Beam Clamps
- Structural Attachments
- Brackets
- Ceiling Plates & Flanges
- Concrete Inserts & Attachments
- Hanger Rods
- Rod Attachments
- Bolts, Nuts, Pins & U-Bolts

Fig. 230

Turnbuckle

Size Range: 3/8" through 2 1/2"

Material: Forged steel

Finish: Plain or Galvanized

Service: Provides adjustment up to 6" for 12" Fig. 230 and 3" for 6" Fig. 230.

Approvals: Complies with Federal Specification A-A-1192A (Type 13), WW-H-171-E (Type 13), ANSI/MSS SP-69 and MSS SP-58 (Type 13).

Ordering: Specify rod size, figure number, name and finish.

Note: The acceptability of galvanized coatings at temperatures above 450°F is at the discretion of the end user.

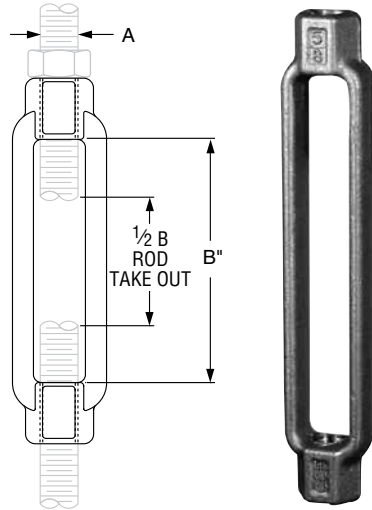


FIG. 230: LOADS (LBS) • WEIGHTS (LBS) • DIMENSIONS (IN)

Rod Size A •	Max Load		Weight	
	650°F	750°F	B= 6" Opening	B=12" Opening
3/8	730	572	0.42	–
1/2	1,350	1,057	0.65	1.20
5/8	2,160	1,692	0.98	1.58
3/4	3,230	2,530	1.50	2.35
7/8	4,480	3,508	1.90	4.05
1	5,900	4,620	2.60	4.02
1 1/4	9,500	7,440	4.50	–
1 1/2	13,800	10,807	6.40	–
1 3/4	18,600	14,566	11.00	–
2	24,600	19,265	14.90	–
2 1/4	32,300	25,295	19.60	–
2 1/2	39,800	31,169	26.90	–

• Tapped right hand and left hand thread. Larger rod sizes or openings available upon request

Fig. 233

Turnbuckle

Size Range: 1 1/4" through 5"

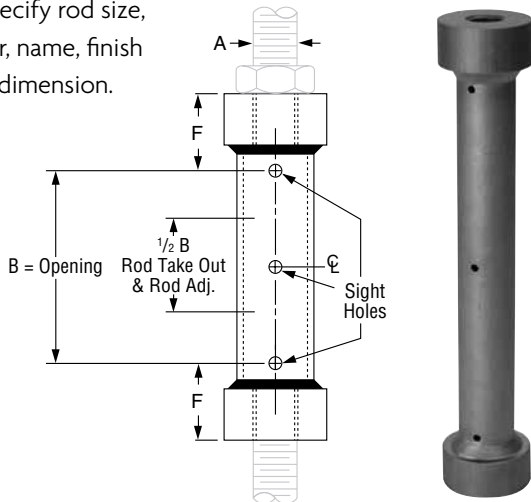
Material: Carbon steel

Finish: Plain or Galvanized

Services: Provides adjustments up to 12" with loads up thru 184,000 pounds.

Approvals: Complies with Federal Specification A-A-1192A (Type 13), WW-H-171-E (Type 13), ANSI/MSS SP-69 and MSS SP-58 (Type 13).

Ordering: Specify rod size, figure number, name, finish and opening dimension.



**FIG. 233:
LOADS (LBS) • WEIGHTS (LBS) • DIMENSIONS (IN)**

Rod Size* A	Max Load	Weight/Opening				F
		B= 6"	B=12"	B=18"	B=24"	
1 1/4	9,500	–	9.0	10.8	12.6	2 1/8
1 1/2	13,800	–	12.4	14.9	17.4	2 3/8
1 3/4	18,600	–	11.7	14.2	16.7	
2	24,600	–	20.9	24.7	28.5	3 1/16
2 1/4	32,300	–	29.5	34.6	39.7	3 1/4
2 1/2	39,800	–	28.3	33.4	38.5	
2 3/4	49,400	35.6	41.8	48.1	54.3	3 1/2
3	60,100	41.6	49.1	56.6	64.1	3 13/16
3 1/4 •	71,900	39.6	47.0	54.5	62.0	
3 1/2 •	84,700	72.5	82.9	93.3	103.7	4 1/16
3 3/4 •	98,500	69.6	80.0	90.4	107.30	
4 •	113,400	110.7	125.1	139.4	153.6	5
4 1/4 •	129,400	107.1	121.5	135.7	150.0	
4 1/2 •	146,600	233.5	255.2	276.9	298.6	6 13/16
4 3/4 •	164,700	227.6	249.3	271.0	292.7	
5 •	184,000	221.4	243.1	264.8	286.5	

• Furnished with 4 UN series threads. *Tapped right hand and left hand thread.

Fig. 291

Clevis Pin with Cotters

Size Range: 1/2" through 4"

Material: Carbon steel

Finish: Plain or Galvanized

Maximum Temperature: 650° F

Service: For use with type C variable spring hanger, type C constant support (Fig. 81-H only) and Fig. 66 welded beam attachment.

Ordering: Specify pin diameter, figure number, name, finish and if cotter pins are required.

Note: The acceptability of galvanized coatings at temperatures above 450° F is at the discretion of the end user.

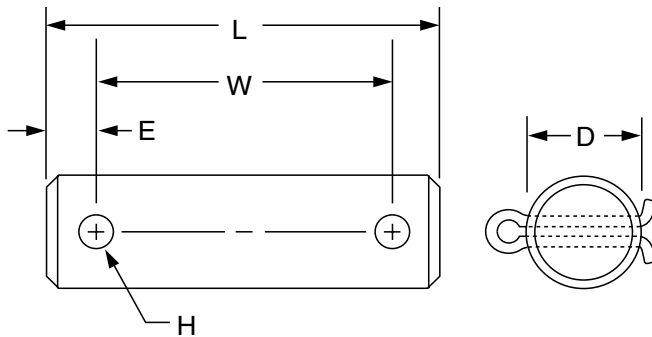


FIG. 291: LOADS (LBS) • WEIGHTS (LBS) • DIMENSIONS (IN)

Pin Dia. D	Max Load		Weight	L	W	E	H	Cotter Pin Size
	650° F	750° F						
1/2	730	572	0.12	2 7/8	2 1/8	3/8	5/32	1/8 x 1 1/4
5/8	1,350	1,057	0.18	3 1/8	2 3/8		7/32	3/16 x 1 1/2
3/4	2,160	1,691	0.29	3 5/8	2 7/8			
7/8	3,230	2,529	0.47	4 1/4	3 1/2			
1	4,480	3,508	0.67	4	3 1/4	1/2	9/32	3/16 x 2
1 1/8	5,900	4,620	1.00	4 3/4	4			1/4 x 2 1/2
1 1/8	9,500	7,439	2.10	5 3/8	4 3/8		1/4 x 3	
1 1/8	13,800	10,805	3.30	6	5			
1 3/8	18,600	14,564	4.80	7 1/8	5 7/8	5/8	3/8	3/8 x 3
2 1/4	24,600	19,262	7.20					
2 1/2	32,300	25,291	9.30	7 5/8	6 3/8		3/8 x 3 1/4	
2 3/4	39,800	31,163	12.50	7 7/8	6 5/8			3/8 x 3 3/4
3	49,400	38,680	16.60	8 1/4	6 3/4	3/4	1/2	3/8 x 4
3 1/4	60,100	47,058	20.00	8 1/2	7			1/2 x 5
3 1/2	71,900	56,298	23.90	8 3/4	7 1/4			
3 3/4	84,700	66,320	25.10	9 1/2	8		1/2 x 6	
4	98,500	77,125	34.80	9 3/4	8 1/4			

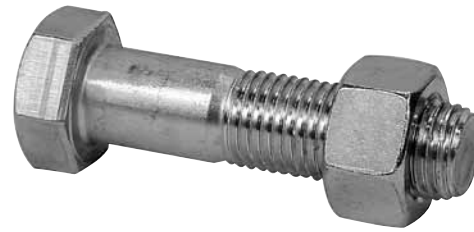
Machine Bolts

Size Range: American Standard hexagon head bolts with American Standard hexagon nuts are stocked in sizes $\frac{3}{8}$ " through $1\frac{1}{8}$ " UNC thread series. Other sizes are available upon request.

Lengths of bolts are measured from under head to extreme point.

Finish: Plain or Electroplated

Ordering: Specify bolt size, name and length.



Hexagon Nuts

Size Range:

- American Standard hexagon nuts - sizes $\frac{1}{4}$ " thru $1\frac{1}{2}$ ".
- American Standard heavy hexagon flat nuts - sizes $1\frac{3}{4}$ " thru $3\frac{3}{4}$ ".

Finish: Plain or Electroplated

Ordering: Specify bolt or rod size and name.

HEX NUTS: DIMENSIONS (IN)		
Bolt /Rod Size	Width	Thickness
$\frac{1}{4}$	$\frac{7}{16}$	$\frac{15}{64}$
$\frac{3}{8}$	$\frac{9}{16}$	$\frac{11}{32}$
$\frac{1}{2}$	$\frac{3}{4}$	$\frac{29}{64}$
$\frac{5}{8}$	$\frac{15}{16}$	$\frac{9}{16}$
$\frac{3}{4}$	$1\frac{1}{8}$	$\frac{43}{64}$
$\frac{7}{8}$	$1\frac{5}{16}$	$\frac{25}{32}$
1	$1\frac{1}{2}$	$\frac{57}{64}$
$1\frac{1}{4}$	$1\frac{7}{8}$	$1\frac{3}{32}$
$1\frac{3}{8}$	$2\frac{1}{16}$	$1\frac{13}{64}$
$1\frac{1}{2}$	$2\frac{1}{4}$	$1\frac{5}{16}$

HEAVY HEX NUTS: DIMENSIONS (IN)		
Bolt /Rod Size	Width	Thickness
$1\frac{3}{4}$	$2\frac{3}{4}$	$1\frac{25}{32}$
2	$3\frac{1}{8}$	$2\frac{1}{32}$
$2\frac{1}{4}$	$3\frac{1}{2}$	$2\frac{19}{64}$
$2\frac{1}{2}$	$3\frac{7}{8}$	$2\frac{35}{64}$
$2\frac{3}{4}$	$4\frac{1}{4}$	$2\frac{13}{16}$
3	$4\frac{5}{8}$	$3\frac{1}{16}$
$3\frac{1}{4}$ ■	5	$3\frac{5}{16}$
$3\frac{1}{2}$ ■	$5\frac{3}{8}$	$3\frac{9}{16}$
$3\frac{3}{4}$ ■	$5\frac{3}{4}$	$3\frac{13}{16}$

■ Furnished with 8 UN or 4 UN threads as required.