

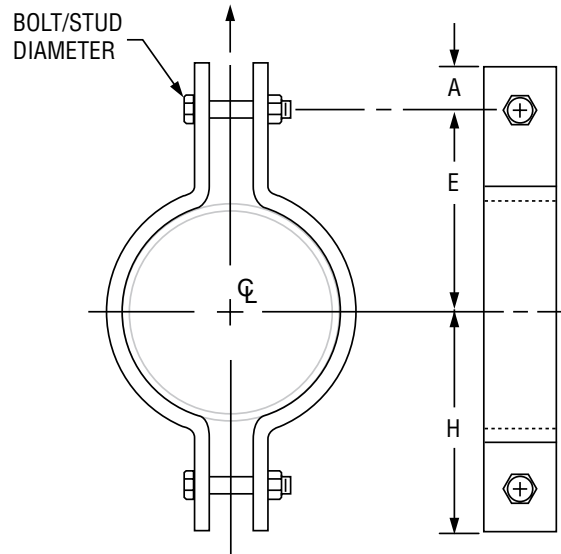
## Fig. 42 SD

### Non-Standard Two Bolt Pipe Clamp

**Ordering:**

Specify Fig. 42SD pipe clamp, material specification, pipe size, load, temperature and finish.

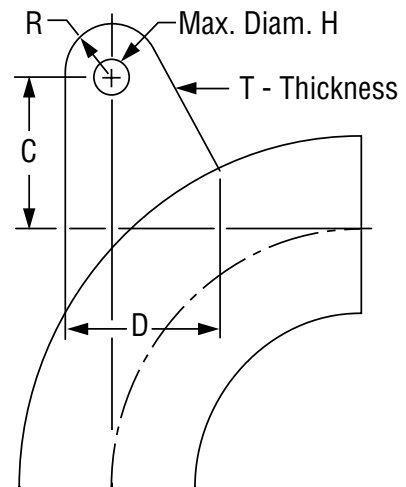
Alloy clamps, unless otherwise specified, will be furnished with alloy studs made from ASTM A 193-B7 stud stock and ASTM A 194-Gr. 2H hex nuts.



## Fig. 53 SD

### Welding Lug for L.R. Elbow

This product is a special design per customer requirements. Contact Anvil Intl. for further information and how to order sizes not shown. Local pipe wall stress should be evaluated.



**FIG. 53SD: DIMENSIONS (IN)**

Pipe Size	Rod Size A	C Rod Take Out	T	D	R	H Max. Dia.	
2½	¾	7 <sup>5</sup> / <sub>16</sub>	½	3½	1½	1 <sup>5</sup> / <sub>16</sub>	
3		7 <sup>7</sup> / <sub>16</sub>					
3½	7/8	7½				1 <sup>1</sup> / <sub>16</sub>	
4		7 <sup>9</sup> / <sub>16</sub>					
6		7 <sup>7</sup> / <sub>16</sub>				5	2
8	1	5					
10	1¼	7 <sup>9</sup> / <sub>16</sub>	5/8	6	2½	1½	
12	1½	7 <sup>1</sup> / <sub>8</sub>	¾	7	3	1¾	

\* Based on maximum 4" insulation.

PROJECT INFORMATION		APPROVAL STAMP	
Project:		<input type="checkbox"/> Approved	
Address:		<input type="checkbox"/> Approved as noted	
Contractor:		<input type="checkbox"/> Not approved	
Engineer:		Remarks:	
Submittal Date:			
Notes 1:			
Notes 2:			