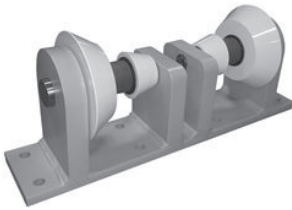


**ANVIL EPS™**  
ENGINEERED PIPE SUPPORTS

**NEW!**

## **Anvil's Answer to Cathodic Isolation** *Revolutionary Large Diameter Pipeline Support*



Anvil's new **76CP Non-Conductive Isolation Roller** is revolutionizing large diameter pipeline support. Customers with large oil, gas and water pipelines requiring an active cathodic protection system, struggle with isolating the pipeline from the supporting structures while still being able to carry the heavy loads and movement of the system.

Traditionally, isolation has been achieved with conventional PVC pipe slide pads, but these pads are not effective with the high system loads. Anvil's Figure 76CP cannot only handle the high loads and movement of the system but improve installation time by eliminating the need for installing the extra isolation pad and bolting, thereby providing a significant cost savings.

The rollers unique construction has the isolation feature built into it's design. In addition, the rollers are coated with a fusion-bond epoxy powder coating widely used on pipelines and piping connections and the base has an anti-corrosion coating that protects steel galvanically in the harshest environments. Able to accommodate pipelines up to 72" and loads up to 60,000 lbs., this roller is the support and cathodic protection answer you've been looking for.

- ***Provides Cathodic Isolation***
- ***Anti-Corrosion Coating***
- ***Reduces Installation Time and Costs***
- ***Supports 72" Pipe and Loads Up to 60,000 lbs.***